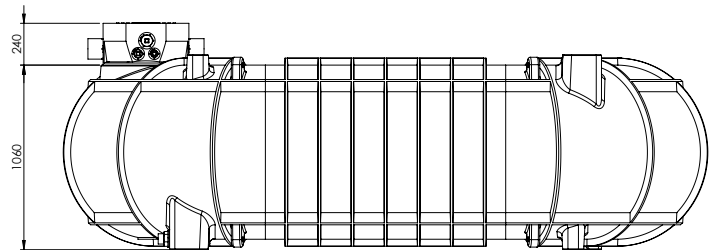
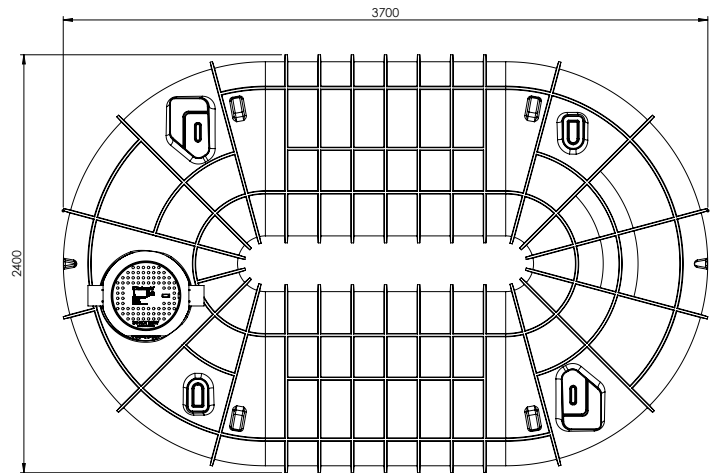
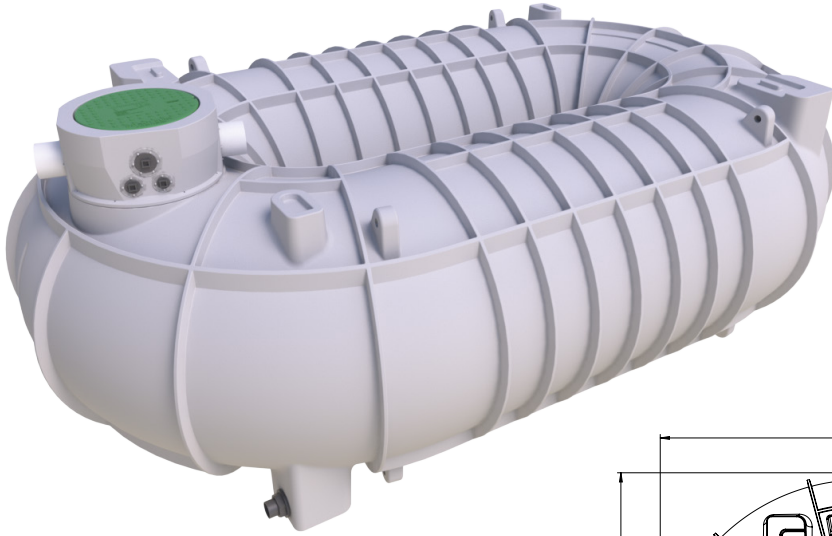



# 5000L Underground Water Tank



 **Tankmasta**<sup>®</sup>

Viscount Rotational Mouldings Pty Ltd

ABN 19067462337

 81 Frankston Gardens Drive  
Carrum Downs, Victoria, 3201, Australia

 (03) 8770 3200

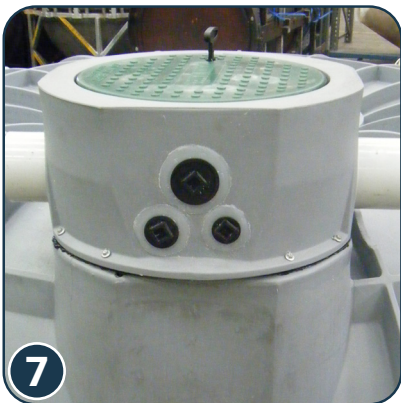
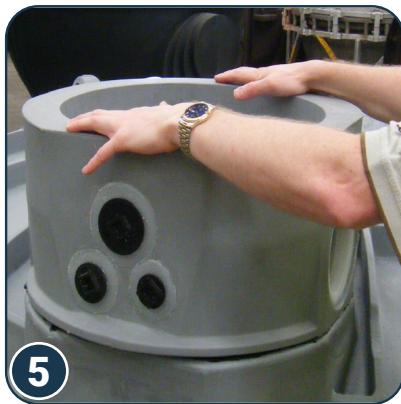
 1800 775 000

 [vrmsales@viscountroto.com.au](mailto:vrmsales@viscountroto.com.au)

 [www.viscountroto.com.au](http://www.viscountroto.com.au)



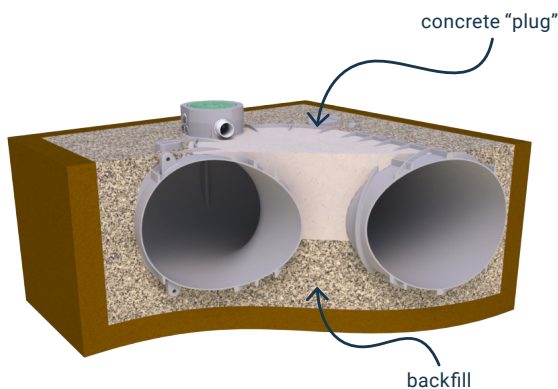
# Step by Step Installation Instructions



Viscount Rotational Mouldings Pty Ltd shall not accept liability of any kind arising out of misuse of the product or use for any other purpose than its intended use as contained herein. All information supplied in this brochure was correct at time of printing. Viscount Rotational Mouldings Pty Ltd reserves the right to change specifications, colours and designs without further notice. Effective 19.07.2022.

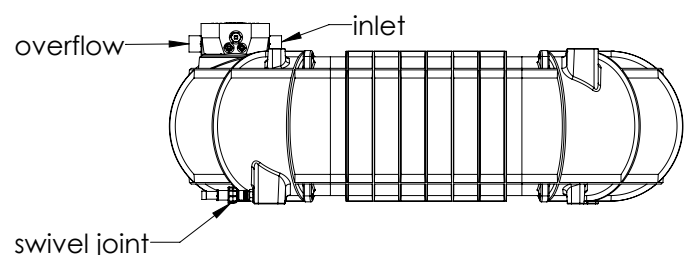
- Step 1** Excavate hole to dimensions. As a general rule an excavation should be 200mm greater than the length and width of the tank. This will change depending on the soil type being excavated and is subject to individual site assessment.
- Step 2** Prepare base of hole with backfill material.
- Step 3** Apply silicone to surface of barrel filter unit that is to be connected to tank
- Step 4** Apply silicone to surface of tank that is to be connected to unit
- Step 5** Fit neck into place, apply even pressure to bind silicone. Note: Neck can be fitted at any angle to best suit your plumbing requirements.
- Step 6** Pre-drill holes for screws with 3mm drill bit.
- Step 7** Attach barrel filter unit. Drill in self-tapping T17 hex head 50mm screws (8 supplied).
- Step 8** Lift tank into hole using lifting lugs on top of tank. Fill the tank with water.
- Step 9** Fill around perimeter of tank with backfill material (recommended 10mm aggregate).
- Step 10** Fill centre of tank up to 150mm below the tank's half way point with backfill material.
- Step 11** Fill centre of tank with N25 concrete ballast.
- Step 12** Tank is now ready to be fitted and covered.

# Installation Requirements



- The backfill material shall be a free draining granular backfill with a maximum density of 1,800 kg/m<sup>3</sup> and a minimum angle of internal friction of 30 degrees. It shall be compacted to 98% standard dry density in maximum 200mm thick compacted layers at optimum moisture content +/-2%. In circumstances where the existing subgrade within the zone of influence of the tank has soil properties outside that nominated for the back fill, then that subgrade shall be removed and replaced.
- During installation of the tank, the open centre zone of the tank is filled with N25 concrete to form a "plug". This concrete plug is to extend from a minimum of 150mm below the horizontal centreline of the tank up to the top of the top of the tank as a minimum.

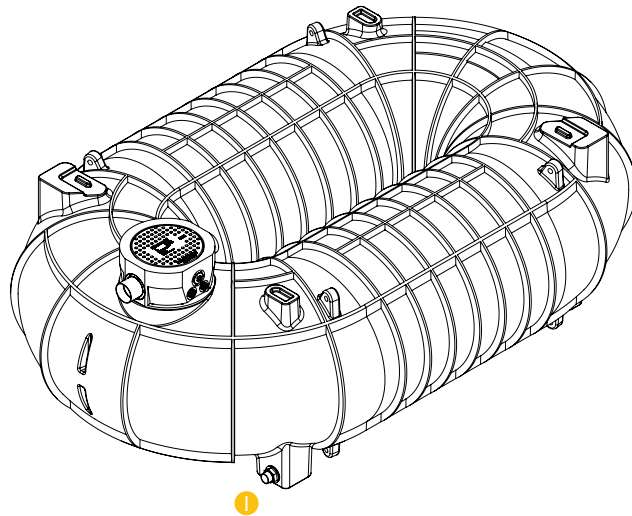
- The tank must not be installed within sites in which the water table is permanently above the underside of the tank.
- The surcharge loads are not applied over the top of the tank within it's zone of influence. The zone of influence is defined within Note 1 of Clause 5.2.3 of AS/NZS4766-2020 and is a region extending a minimum distance of 2,640mm from the perimeter of the tank. We note that surcharge loading includes (but is not limited to) stacked materials, crowd loading and vehicular loading.
- The tank must be installed over a stable subgrade material which is flat, level and free from any debris loose items etc. The base shall be compacted to 98% standard dry density at a moisture content +/-2% from optimum moisture content. It is recommended that a 1% fall be created in the base in the direction of the inlet to allow any sediment to collect at this point to provide easy maintenance of the tank.



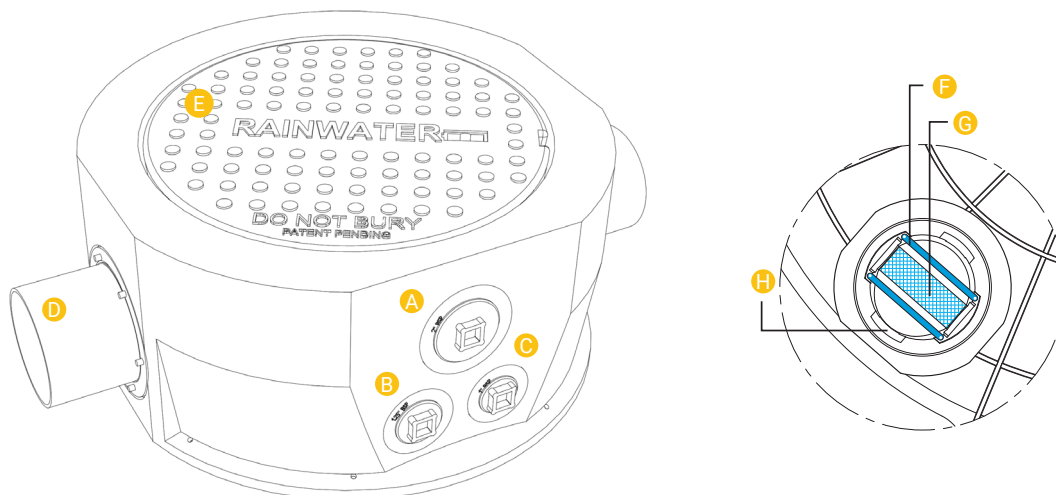
- Fittings are sealed using thread sealant or Teflon plumbers tape.
- A swivel joint must be used on the outlet to allow for expansion and contraction of the tank.

Viscount Rotational Mouldings Pty Ltd warrants that its underground water tanks are free from defect caused by poor workmanship or faulty material & that its underground water tanks will be fit for the purpose for which they were designed, namely storing water, for a period of seven years from the date of purchase, subject to conditions. For a full copy of Viscount Rotational Mouldings Pty Ltd warranty, please contact VRM directly.

# Standard Tank Fit Out & Fittings



## Barrel Filter Assembly



Barrel Filter Assembly supplied separately to tank.

- A 50mm female thread - suitable for an electrical cable with a standard electrical plug fitted.
- B 32mm female thread - suitable for water outlet.
- C 25mm female thread - suitable for water inlet for top up system or air vent between inter connected tanks.
- D 2 x 100mm socket - used for inlet & overflow.
- E Lockable Lid
- F 2 x child safety bars
- G 1 x 100mm Barrel filter
- H 2 x flat catch plates for lockable lid
- I 50mm or 100mm male BSP