

## UNDERGROUND WATER SOLUTIONS

Do you want to harvest rain water without valuable surface space being taken up by a tank? Australian made underground water tanks are made in Australia according to a patented and leading German-engineered design that provides optimum strength and reliability.

### Li-Lo Underground Tank Features

- German engineered and manufactured in Australia
- No Ballasting required
- Compact shallow excavation design
- Fully integrated self cleaning option
- Driveway manhole option available
- Child-proof cover option available
- 75% Less Digging than a Concrete Cistern
- Save more than 100 wheelbarrow loads of soil

Available in a variety of different litre capacities.  
Give us a call today to discuss all your underground water tank requirements.



## UNDER DECK WATER TANKS

Under Deck water tanks are commonly used when space is limited with above ground tanks or to utilize the areas under your house or deck.

The tank is made using food grade UV20 Polyethylene and includes one outlet and overflow. If you need to connect multiple tanks we can add additional outlets so you can daisy chain one tank to the next. Likewise we can connect multiple overflows and join to the tank.

Being such shallow tanks external pumps are required as your traditional submersible pumps will not fit, nor will they be suitable for the application.

Available in a variety of different sizes to suit your application.

Give us a call today to discuss your Under Deck requirements.

## PUMP WELLS

Our Polyethylene Pump Wells are typically used for stormwater and sewage transfer, rainwater retention and harvesting for domestic, commercial and industrial applications.

Our Polyethylene Pump Wells are designed and constructed to meet Australian Standards for underground soil loading requirements using hexene based polyethylene resin complying with AS/NZ: 4766 tank standards for water and chemical storage. The polyethylene pump wells also comply with AS4020 standards for contact with potable water.

Available in a variety of different configurations from single pump systems to multiple pumps with alarm systems and backup batteries.

Give us a call today to discuss your Pump Well requirements.



## RAINWATER RETENTION/DETENTION TANKS

### CONTROLLED RELEASE INTO STORMWATER SYSTEM

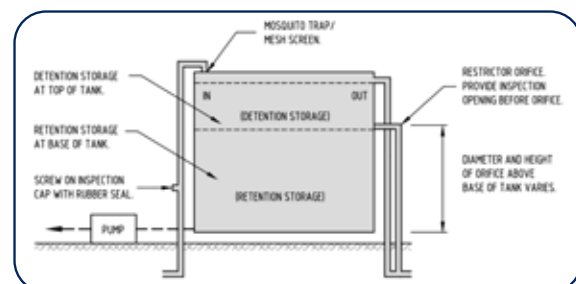
What are Retention/Detention Tanks?

Retention/Detention tanks are often a requisite by councils and government bodies to control the release of water into the stormwater system.

All Yarra Plastics above-ground rainwater tanks (round or slim) can be adapted to meet your retention/detention requirements.

### Detention Function

In the event of heavy rainfall the upper portion of the tank temporarily contains the water surge. This process is known as stormwater detention and takes the pressure off municipal stormwater systems with this water being slowly released through a small outlet



## About Us

Yarra Plastics formally known as Yarrowonga Plastics have been operating in the Rotational Moulding Industry since 1990.

Being an all-Australian owned and operated business we are committed to giving you our valued customer, the best quality product and service to meet your expectations.

## The Yarra Tank

Yarra Plastics manufacture our tanks to the highest of quality possible. We only use 'one piece' construction technology when forming our tanks and use only Australian made heavy metal free UV stabilised food grade polyethylene plastic.

All Yarra Plastics tanks are manufactured thicker than the norm resulting in a Superior Strength.

We are so confident in our product that Yarra Plastics offer a 10-year repair/replacement warranty from date of manufacture if it is proven there is a manufacturing fault.

## INSTALLATION INSTRUCTIONS

### ROUND TANKS

- Your new Yarra round tank is to be situated on a solid level, flat base which is well compacted and free of any sharp objects, rocks or stones
- A concrete base is preferred but a 75mm compacted sand or crusher dust base is acceptable
- The prepared area must be at least 300mm larger than the tanks base, so that the sand cannot erode from under the tank
- The overflow from the tank must be plumbed so that it discharges 300mm away from the base of the tank

\*It is recommended that a licensed Plumber install your tank in accordance with the regulations in your area.

### SLIMLINE

- Tank must be installed on a smooth, level, reinforced concrete base. Base must be a minimum of 100mm thick and 100mm wider than the tank diameter. Remove sharp objects that may cause damage to the base of the tank
- Slimline tanks must be installed adjacent to a wall with a 50mm clearance. It is not to be attached or fixed to the wall, The tank **MUST** be freestanding
- Tank **MUST** be placed in a position where it will not be subjected to heavy bumps or knocks

## COLOUR RANGE



Black



Slate Grey



Basalt Grey



Birch Grey



Wallaby Grey



Armour Grey



Gull Grey



Clay Brown



Rivergum



Mist Green



Dark Green



Smooth Cream



Merino Beige



Wheat



Dusk



Beige



Off White



Stone



Mountain Blue



Bluestone



Heritage Red



Terrain Red

\*Colours are a guide ONLY and not for accuracy



YARRA PLASTICS  
WATER TANK SPECIALIST

Rotational Moulders of Plastic



Australian Made & Owned

Proudly Victorian  
EST. 1990



www.yarraplastics.com.au

www.yarraplastics.com.au



# ROUND TANKS

All Yarra round tanks come standard with either a 300mm or 400mm Mosquito proof strainer, a 90mm UPVC overflow collar and a 25mm brass outlet.

**1000Ltr Round Tank**  
860mm Diameter  
2000mm Height  
242 Gallons



**2100Ltr Round Tank**  
1180mm Diameter  
2050mm Height  
461 Gallons



**2250Ltr Round Tank**  
1450mm Diameter  
1610mm Height  
495 Gallons



**3000Ltr Round Tank**  
1450mm Diameter  
2040mm Height  
660 Gallons



**5000Ltr Round Tank**  
1850mm Diameter  
2150mm Height  
1090 Gallons



**10000Ltr Round Tank**  
2700mm Diameter  
2120mm Height  
2200 Gallons



**650Ltr Elliptical Tank**  
1180mm Length  
590mm Wide  
1250mm Height  
143 Gallons

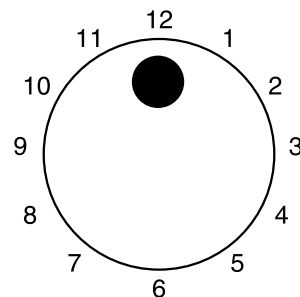


**1100Ltr Elliptical Tank**  
1350mm Length  
760mm Wide  
1500mm Height  
242 Gallons



## ROUND TANK FITTING CONFIGURATIONS

1000L & 10000L ROUND FITOUT POSITION



Configure your round water tank. Nominate the location of your 90mm overflow and 25mm brass outlet

# SLIMLINE TANKS

All Yarra Slimline tanks come standard with 300mm Mosquito proof strainer, a 90mm UPVC overflow collar, and 4 x 25mm moulded brass inserts. Two at pump connection height and two at bucket height, located on the ends of the tank.

**1000Ltr Slimline Tank**  
1900mm Length  
390mm Wide  
1800mm Height  
242 Gallons



**2000Ltr Slimline Tank**  
2040mm Length  
650mm Wide  
1980mm Height  
440 Gallons



**2000Ltr Slimline SB Tank**  
1650mm Length  
760mm Wide  
2020mm Height  
440 Gallons



**2000Ltr Slimline SS Tank**  
2400mm Length  
565mm Wide  
2000mm Height  
440 Gallons



**2000Ltr Slimline LL Tank**  
2500mm Length  
750mm Wide  
1425mm Height  
440 Gallons



**2500Ltr Slimline Tank**  
1980mm Length  
770mm Wide  
2200mm Height  
550 Gallons



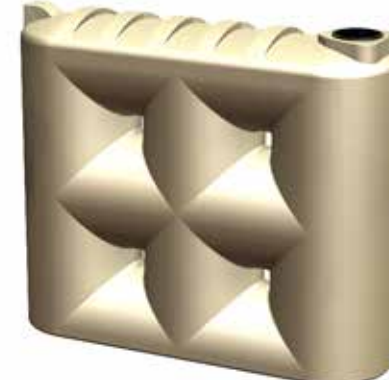
**3200Ltr Slimline Tank**  
2650mm Length  
810mm Wide  
2050mm Height  
704 Gallons



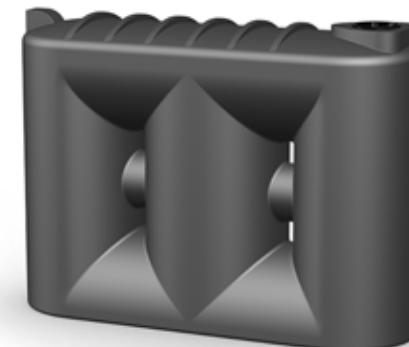
**3000Ltr Slimline SB Tank**  
2100mm Length  
880mm Wide  
2200mm Height  
660 Gallons



**4000Ltr Slimline Tank**  
2650mm Length  
810mm Wide  
2200mm Height  
880 Gallons



**5000Ltr Slimline Tank**  
2900mm Length  
1000mm Wide  
2100mm Height  
1100 Gallons



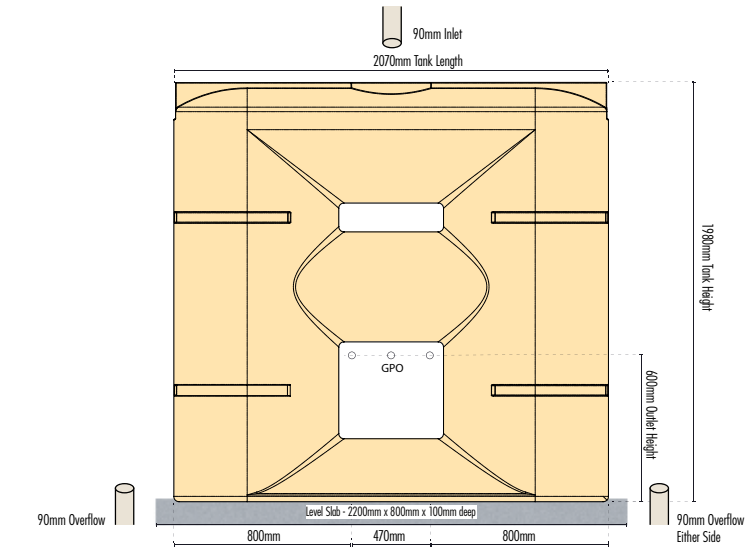
# DESIGNED BY PLUMBERS FOR PLUMBERS AND BUILDERS

## EZY AS TANK MKII

Yarra Plastics is proud to introduce the EZY AS TANK MKII, a system that was designed by plumbers for plumbers and builders to save time and money.

The EZY AS TANK MKII is an exciting product that switches between rain water and mains water to service your toilets and laundry.

Everything is already in place. Your licensed plumber only needs to connect two pipes along with storm water in and overflow out, then plug and flush.



A tough 2000ltr slimline rain water tank, manufactured in Australia using only the best quality UV stabilized, heavy metal free and recyclable food grade polyethylene plastic with the assurance of a 10 year Warranty.

A market leading pump capable of serving most multi story dwellings with auto-restart electronic pump control for automatic operation, smooth tank to mains switch over, backed by a full 2 year in field warranty.

All the hard work has been done so its an EZY choice, enquire today.

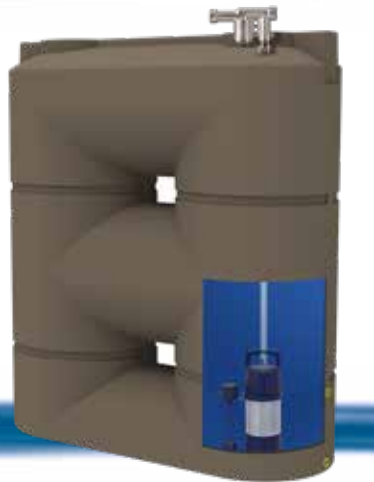
Tank measurements  
2070mm long  
700mm wide  
1980mm height



## EZY AS SUB TANK OPTION

The EZY AS Sub tank option is available and preinstalled throughout our tank range.

The Ezy AS Sub is a class leading submersible multi-stage pressure system with auto-restart electronic pump control for automatic operation topped with a float valve for smooth switch of water and a full flow rain to mains change over. Its as EZY AS picking a tank, picking a colour and having the pump preinstalled, EZY AS.



## PRO PUMP SHOP

Yarra Plastics can supply you with the right pump for your requirements, from watering the garden, to pumping rain water, to multi-level apartment blocks to achieve a 6 Star Energy Rating. Yarra Plastics also carry a large range of water purification systems.

Give us a call today to discuss all of your pump and filtration needs. Tank accessories also available.

